



# Supporting Schools in the State of Michigan for Student eLearning

**While the nation faces unprecedented challenges due to COVID-19, the state of Michigan is committed to improve remote learning for students and address the needs of staff.** As children, parents, and teachers across the state adapt to learning in this new normal, schools need connectivity choices to ensure students can continue to grow and prosper. Schools also need to safeguard the content that children can access, protecting the minors in their care.

Available for all Michigan qualified public and private schools, from K-12 to colleges and universities, this offer enables schools to connect their students to the internet using an AT&T Radiant Core smartphone as a mobile hotspot. The offer includes wireless broadband connectivity and AccessMyLAN™ for content filtering, to help schools implement the Children's Internet Protection Act (CIPA).

### Understanding the promotional data plan:

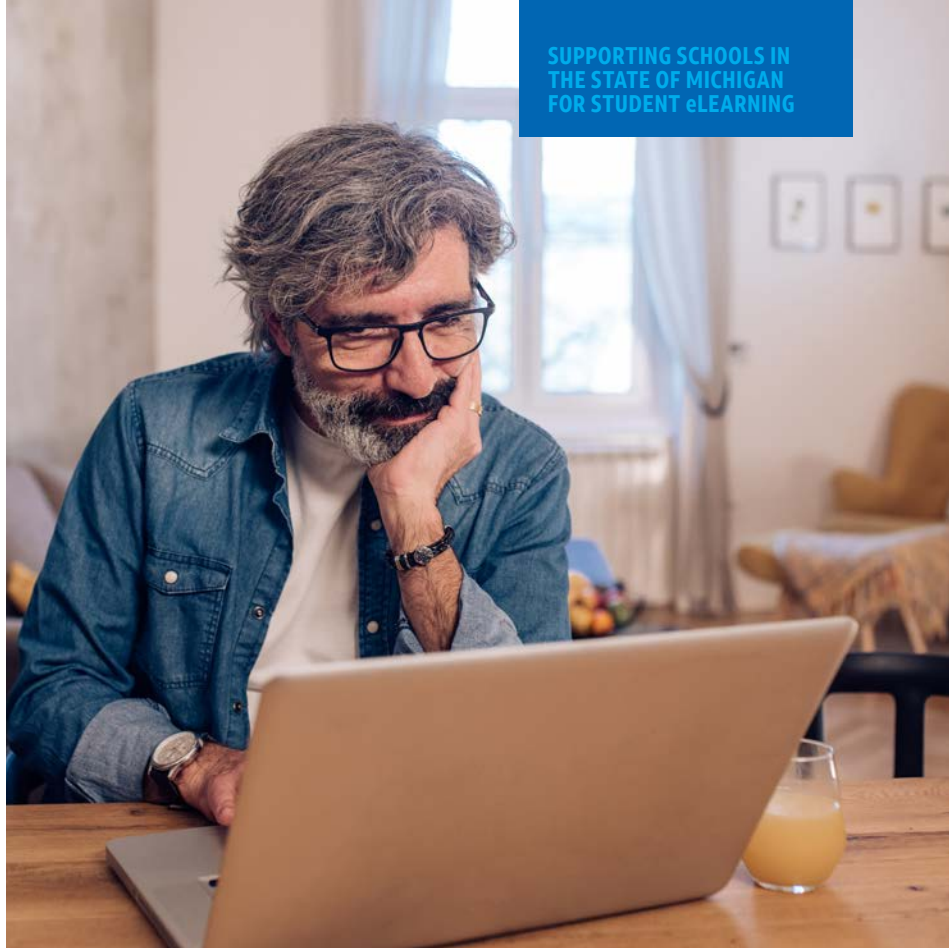
- The AT&T Unlimited Data Only for Education plan provides wireless broadband connectivity with tethering for the AT&T Radiant Core smartphone.
- The list price of the AT&T Unlimited Data Only for Education plan is \$40.00 per month but for schools and universities in Michigan that choose the plan for 6 months, the cost is reduced to \$20.00 per month.
- To ensure the most affordable monthly pricing, if a school or university chooses the plan for 12 months, the cost is \$19.50 per month, and for 24 months at \$19.00 per month.
- Since the offer is intended for schools using smartphones as a hotspot for students, the plan will only include wireless data service. AT&T will block text messaging and voice calls, except 911.

### Learn about the network:

- AT&T is proud to have the nation's best and also fastest wireless network<sup>1</sup>, as well as the largest network in North America<sup>2</sup>.
- From 2017-2019, AT&T invested nearly \$1.5 billion in its wireless and wireline networks in Michigan to expand coverage and improve connectivity in more communities.
- To learn more about AT&T's network investment to keep communities in Michigan connected, please click [here](#).
- To check the AT&T Wireless coverage in your local area, please visit [here](#).

<sup>1</sup> Best Network based on 2019 GWS OneScore. Fastest based on analysis by Ookla® of Speedtest Intelligence® data median download speeds for Q1 2020. Ookla trademarks used under license and reprinted with permission.

<sup>2</sup> Based on comparison of carrier owned & operated networks. No AT&T on-net coverage in select countries, including Canada.





## Features of the AT&T Radiant Core:

- The operating system of the [AT&T Radiant Core](#) is the Android 9 Go Edition.
- The battery use or standby time is up to 500 hours to help keep the learning going all day.
- And just the right size 5.91” x 2.87” x 0.39” and the perfect weight 6.07 oz.

## Information about AccessMyLAN:

- AccessMyLAN is a CIPA-compliant solution that allows schools to manage the internet content students can access and view to help protect them from unsafe content.
- It provides visibility and flexibility for school administrators and IT staff to manage wireless connected devices and help enforce data security policies.
- The list price for AccessMyLAN is \$9.99 per month but for schools and universities in Michigan that choose the service for 6 months, the cost is reduced to \$5.00 per month.
- To ensure the most affordable monthly pricing, if a school or university chooses the service for 12 months, the cost is \$4.50 per month, and for 24 months at \$4.00 per month.
- If you'd like to read more about the management and protection features of AccessMyLAN, please visit this [site](#).

## Please read the important details:

- Customers will receive the offer discounts dependent on the term of their commitment – no commitment, 6-month commitment, 12-month commitment or 24-month commitment. Please contact your AT&T sales professional for details.
- The offer ends on October 31, 2020 and is available to qualifying AT&T customers (public and private K-12 schools, colleges and universities in the state of Michigan).
- This offer is available for each new, qualified data-only line activation with an AT&T Radiant Core smartphone.
- All new lines must be for Corporate Responsibility Users, and customers must establish a separate foundation account for the eligible lines.
- Other fees, taxes, charges & restrictions apply. For additional details regarding the offer, please read below.

**AT&T DATA PLAN AND ACCESSMYLAN FOR DATA-ONLY SMARTPHONE OFFER: Available through 10/31/20.** Avail. only to qual. K-12 public and private schools, colleges & universities in the state of Michigan with a qual. wireless svc agmt (**Qualified Agmt**) and only for Corporate Responsibility User lines of svc. **New lines only.** Lines added under this offer will be billed separately under new foundation account. Req.'s new activation of AT&T Radiant Core smartphone on AT&T Unlimited Data-Only for Education Plan and AccessMyLAN svc. **For AT&T Unlimited Data-Only for Education Plan, after 22GB of data usage on a line in a bill cycle, for the remainder of the bill cycle, AT&T may temporarily slow data speeds on that line during times of network congestion.** For plan details, see [www.att.com/eduunldata](http://www.att.com/eduunldata). **AccessMyLAN:** Service includes (i) a shared APN or VPN configuration provided by AT&T and (ii) a server software agent, network-based remote access platform, and administrator web console provided by Asavie Technologies, Inc. (**Asavie**). Controls can be used by the administrator to restrict what resources may be accessed and/or when a user can access the network. Service is subj. to the Asavie software license found at [www.AccessMyLAN.com/channel/0985/eula.pdf](http://www.AccessMyLAN.com/channel/0985/eula.pdf) (**EULA**). In order to support provision of the service, the EULA provides that as part of the AccessMyLAN service, Asavie and its affiliates may collect and process data including, without limitation, the following (which may include personal data): device number (MSISDN & IMEI), time and date of use of device when using mobile data or WiFi, amount of data sent and received, location of access, websites accessed and the type of website accessed. For managed devices (i.e., devices where AccessMyLAN is used as the mobile device manager), then AccessMyLAN may collect the names of applications installed on the device. The application name data will only be collected if you enable the App Control feature in the AccessMyLAN management portal. Asavie and its affiliates (being any related entity, subsidiary or holding company of Asavie) is required to make use of data (which may include personal data) sent from end users' devices and computers in order to perform the AccessMyLAN service. Asavie and its affiliates may also make use of this data to generate anonymous statistical data for product development and marketing purposes. AT&T will have no access to this data. For full service details, see <https://www.business.att.com/content/dam/businesscenter/pdf/accessmylan-from-att-product-brief-3-23-20.pdf>. **Limits: Data plans and AccessMyLAN svcs may be used for educational purposes only and can be cancelled at any time. Promotion may not be combinable with other offers/promotions. Promotion, terms, & restr's subject to change & may be modified or terminated at any time without notice.**

**GEN. WIRELESS SVC TERMS: Subject to Qualified Agmt. Deposit:** may apply per line. Prices may vary by location. Credit approval, taxes, fees, overage, monthly, other charges, usage, coverage & other restr's apply. Early termination/cancellation fee may apply if customer purchases a subsidized device; see Qualified Agmt for details. See [www.att.com/mobilityfees](http://www.att.com/mobilityfees) for fees & charges. AT&T svc is subject to AT&T network management policies. See [www.att.com/broadbandinfo](http://www.att.com/broadbandinfo) for details. Int'l and domestic off-net data may be at 2G speeds.